

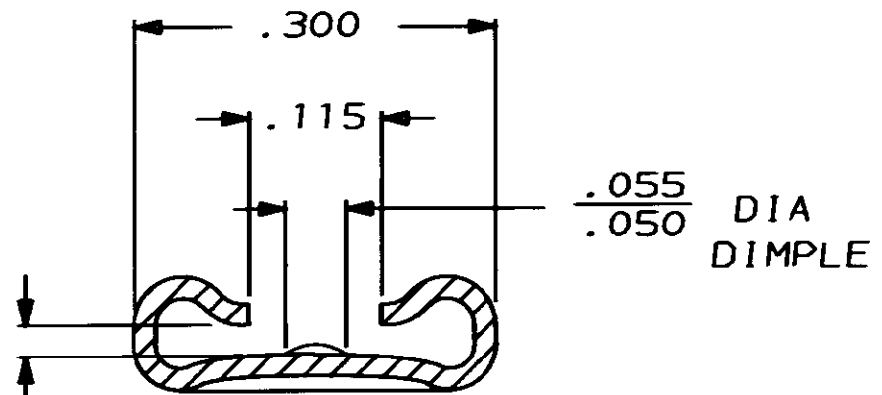
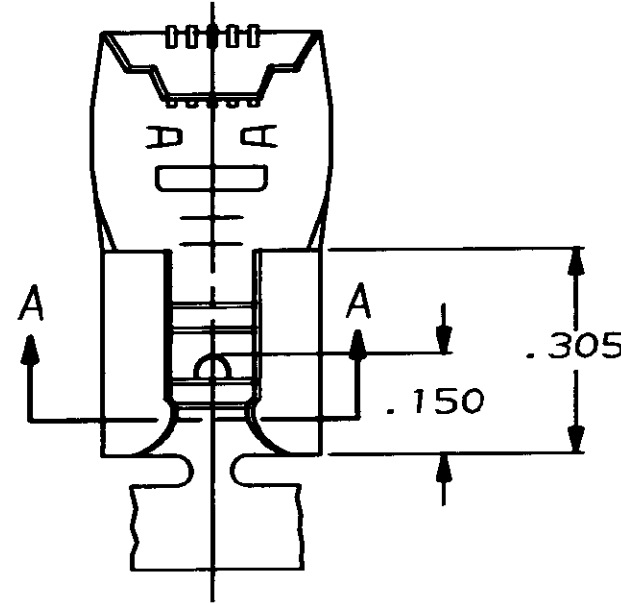
4
DRAWING MADE IN THIRD ANGLE PROJECTION

3
 ,19

2
1

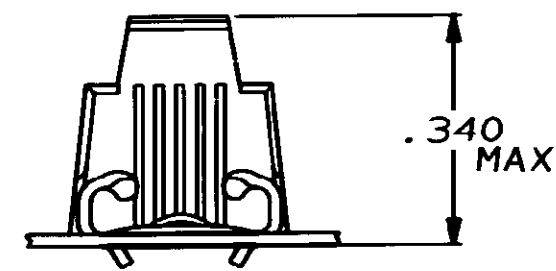
THIS DRAWING IS UNPUBLISHED. RELEASED FOR PUBLICATION
 © COPYRIGHT 1972 BY AMP INCORPORATED, HARRISBURG, PA. ALL INTERNATIONAL RIGHTS RESERVED. AMP PRODUCTS MAY BE COVERED BY U.S. AND FOREIGN PATENTS AND/OR PATENTS PENDING.

LOC	DIST	REVISIONS						
AF	50	P	F	ZONE	LTR	DESCRIPTION	DATE	APPROVED
						E REVISED AF-7660	10/18/91	JR



1- CONTINUOUS STRIP ON REELS.

FITS .250 SERIES FASTON TAB
SECTION A-A



18-12 OR (2) #16	.032 ±.001	PRE-TIN	.016 4M BRASS	62091-2
18-12 OR (2) #16	.032 ±.001	---	.016 4M BRASS	62091-1
WIRE SIZE	TAB THK	FINISH	MATERIAL	PART NO

UNLESS OTHERWISE SPECIFIED DIMENSIONS ARE IN INCHES TOLERANCES ON: 2 PL DEC ± _____ 3 PL DEC ± .015 ANGLES ± _____	DR <i>JR Ratto</i> 2-3-86	AMP AMP INCORPORATED Harrisburg, Pa. 17105		
	CHK _____			
	MATERIAL SEE TABLE	APPD _____	NAME .250 SERIES FLAG FASTON RECEPTACLE	
	FINISH SEE TABLE	PRODUCT SPEC _____	SIZE B	FSCM NO 00779
	APPLICATION SPEC _____	SCALE NTS	SHEET 1 OF 1	
	WEIGHT _____			