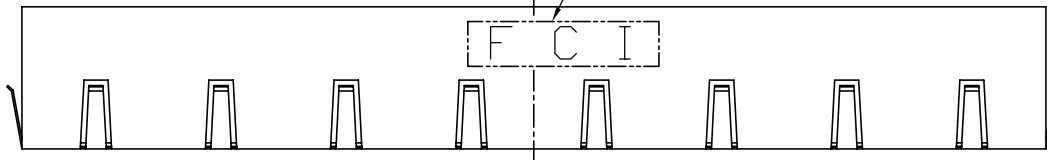


FCI LOGO (SEE NOTE 3)



114.3

97.79 (13.97x7 pitch)

13.97 TYP.

PIN 1

PIN 8

LED1 (OPTIONAL)

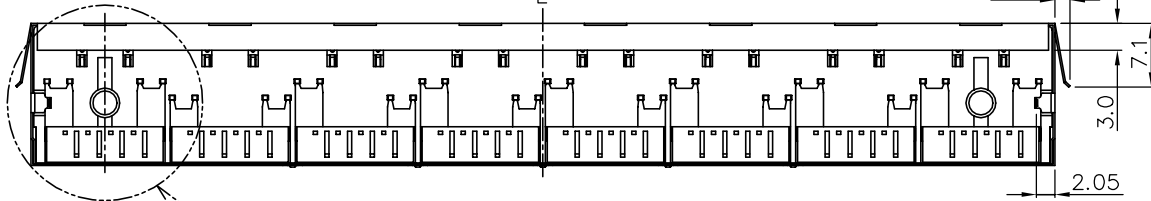
LED2 (OPTIONAL)

13.97 TYP.

55.88 (13.97x 4 pitch)

110.0

1.7



12.95

2.8

2.75±0.25

3.7

1.20

2.40

8.87

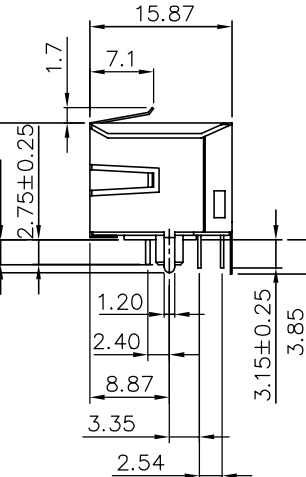
3.35

2.54

3.15±0.25

3.85

2.05

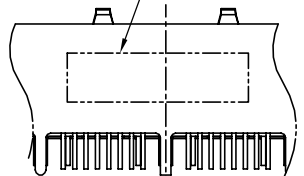


15.87

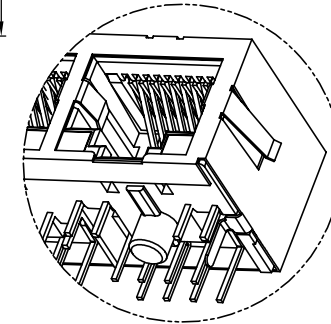
1.7

7.1

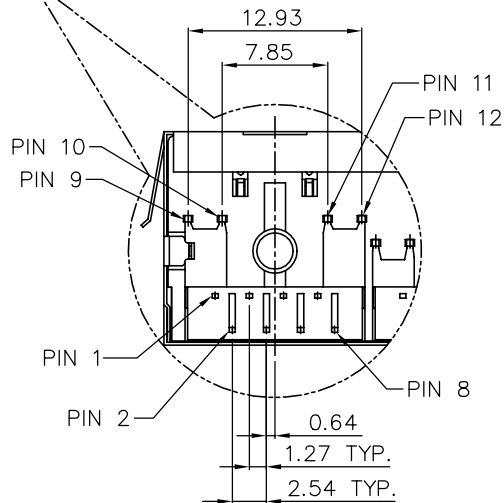
PRINT DATE CODE  
SEE NOTE 4



BACK VIEW



PARTIAL VIEW



12.93

7.85

PIN 11

PIN 12

PIN 10

PIN 9

PIN 1

PIN 8

PIN 2

0.64

1.27 TYP.

2.54 TYP.

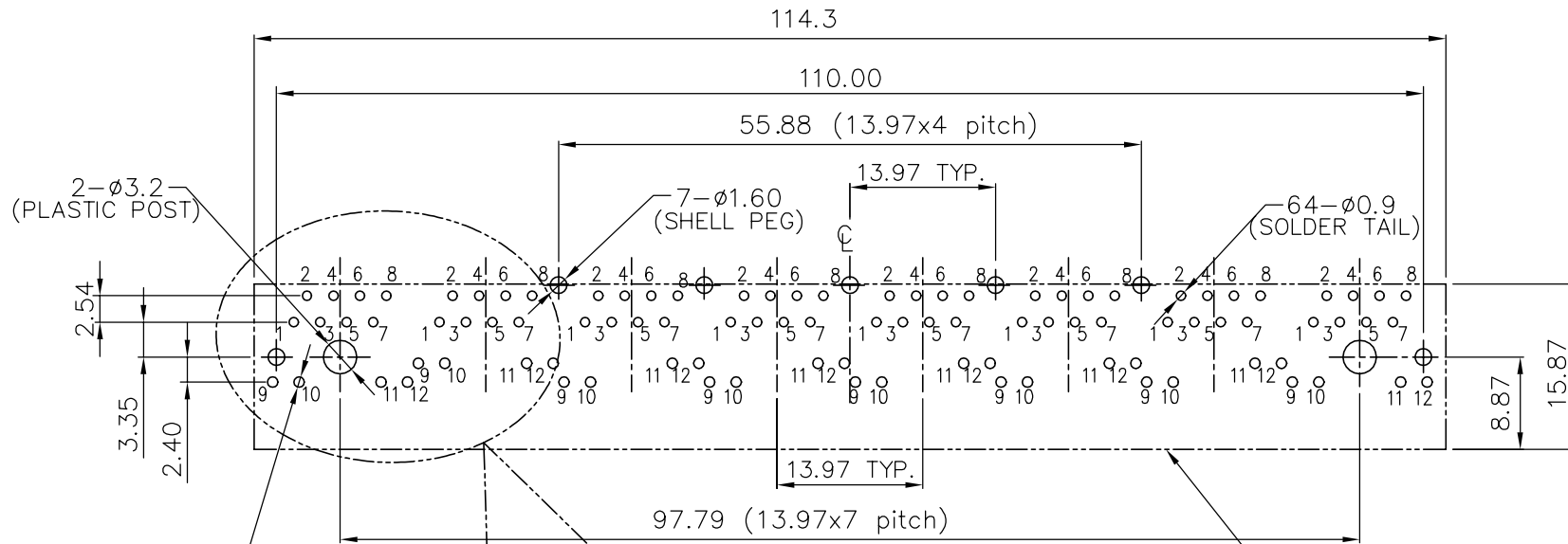
mat'l. code				tolerances unless otherwise specified			CUSTOMER COPY		FCI www.fciconnect.com	
ltr	ecn no	dr	date	linear	.X ±0.25		projection MM	title RJ 1x8 TAB DOWN WITH LED & EMI WITHOUT TRANSFORMER		
A	T10-0122	WL	08/02/10		.XX ±0.20			product family		
B	T10-0125	WL	08/05/10		.XXX ±0.15			size		
C	ECN-ELX-N-008544	A.ZH	12/06/11	angles			scale A4	10113616		
				dr	WENDY CHEN	02/25/10		code		
				engr	WENDY CHEN	02/25/10		NT		
				chr	GARY HSIEH	02/25/10	sheet			
				appd	JOSEPH HSIA	02/25/10	1 of 3			
sheet index	revision sheet	C 1~3					cage code		Released 22526	



Copyright FCI.

B

B

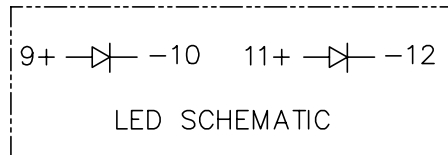
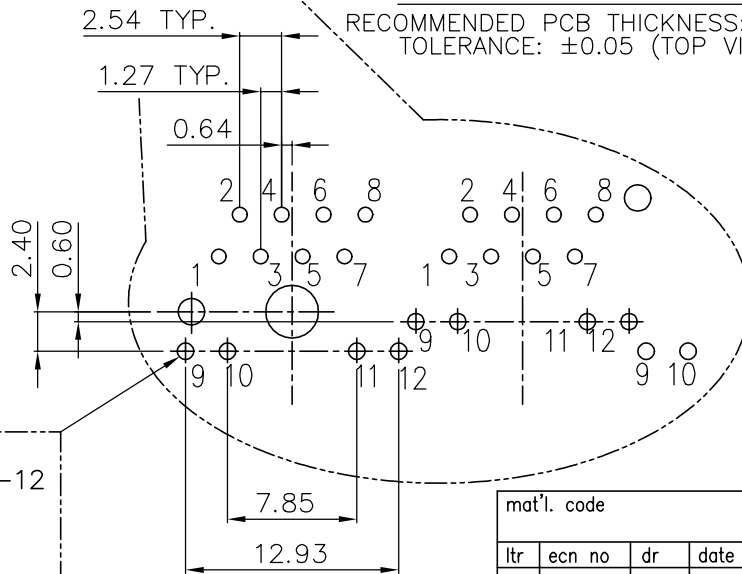


32-ø1.00  
(LED SOLDER TAIL)

RECOMMENDED PCB LAYOUT

RECOMMENDED PCB THICKNESS: 1.6mm  
TOLERANCE: ±0.05 (TOP VIEW)

KEEP OUT ZONE.  
NO PATTERN UNDER THIS AREA.



mat'l. code				tolerances unless otherwise specified			CUSTOMER COPY		FCJ www.fcconnect.com	
ltr	ecr no	dr	date	linear	.X ±0.25		projection	title		
C					.XX ±0.20			RJ 1x8 TAB DOWN WITH LED & EMI WITHOUT TRANSFORMER		
					.XXX ±0.15			product family		
				angles			MM	size		code
				dr	WENDY CHEN	02/25/10		A4		NT
				enr	WENDY CHEN	02/25/10		scale		sheet
				chr	GARY HSIEH	02/25/10		10113616		2 of 3
				appd	JOSEPH HSIA	02/25/10				
sheet index	revision sheet									



Copyright FCI.

B

B

NOTE:

1. MATERIAL:
  - HOUSING: THERMOPLASTIC HIGH TEMPERATURE, UL 94V-0, COLOR-BLACK.
  - INSERT HOUSING: THERMOPLASTIC HIGH TEMPERATURE, UL 94V-0, COLOR-BLACK.
  - CONTACTS: COPPER ALLOY.
  - LED SOLDER TAIL: STEEL.
  - SHIELD: COPPER ALLOY.
2. FINISH:
  - CONTACTS: 50u" MIN. NICKEL UNDER PLATED OVER ALL. SELECTIVE GOLD PLATED ON CONTACT AREA, 1u" GOLD PLATED ON SOLDER TAIL.
  - LED SOLDER TAIL: 100u" MIN. MATTE TIN OVER 50u" NICKEL UNDER PLATED.
  - SHELL: 20u" MIN. NICKEL OVER ALL.
3. "FCI" LOGO IS STAMPED ON THE SHIELD.
4. "DATE CODE" DESCRIPTION:
  - XX XX WEEK
  - YEAR (EX. : 10--2010)
5. PART NUMBER DESCRIPTION:
  - 10113616-X X X X X LF
  - LEAD FREE
  - OPTIONAL GROUND SPRING  
0 : WITHOUT  
1 : WITH
  - LED COLOR  
0 : WITHOUT LED  
1 : LED1: GREEN / LED2:YELLOW  
2 : LED1: YELLOW / LED2:GREEN  
3 : LED1: GREEN / LED2:GREEN
  - CONTACT AREA PLATING  
1 : 15u" GOLD PLATING  
2 : 30u" GOLD PLATING  
3 : 50u" GOLD PLATING  
4 : 6u" GOLD PLATING  
5 : 1u" GOLD FLASH PLATING
  - ELECTRICAL CIRCUIT  
01: SEE FIGURE 1

6. PRODUCT PERFORMANCE PER SPEC. : GS-12-0990.
7. PACKING SPEC. : GS-14-1503.
8. THIS PRODUCT MEETS THE EUROPEAN UNION DIRECTIVE AS DESCRIBED IN GS-22-008.
9. THE HOUSING WILL WITHSTAND EXPOSURE TO 265°C PEAK TEMPERATURE FOR 5 SECONDS IN A WAVE SOLDER APPLICATION WITH A CIRCUIT BOARD.

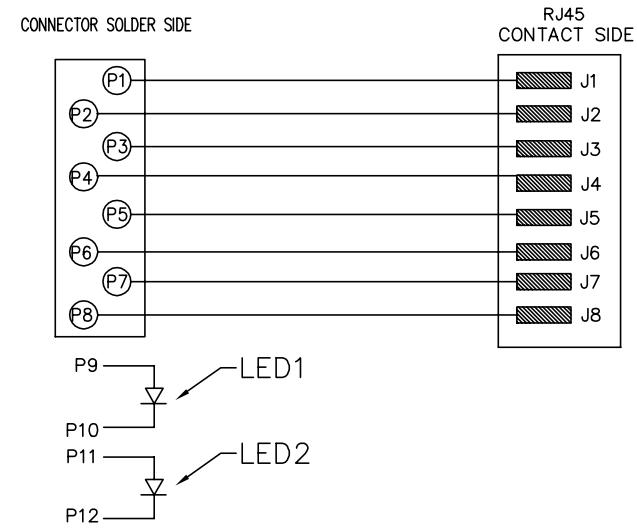


FIGURE 1

mat'l. code				tolerances unless otherwise specified			CUSTOMER COPY		FCI		www.fciconnect.com	
ltr	ecn no	dr	date	linear	.X ±0.25		projection	title				
C					.XX ±0.20			RJ 1x8 TAB DOWN WITH LED & EMI WITHOUT TRANSFORMER				
					.XXX ±0.15							
				angles			MM		product family		code	
				dr	WENDY CHEN	02/25/10	← MM →		size		NT	
				engr	WENDY CHEN	02/25/10	scale		dwg no		sheet	
				chr	GARY HSIEH	02/25/10	A4		10113616		3 of 3	
				appd	JOSEPH HSIA	02/25/10						
sheet index	revision sheet											



Copyright FCI.