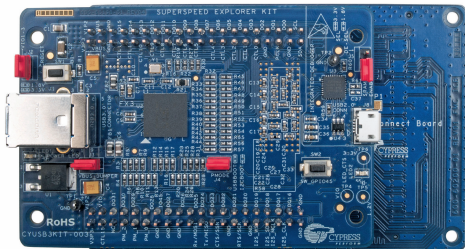
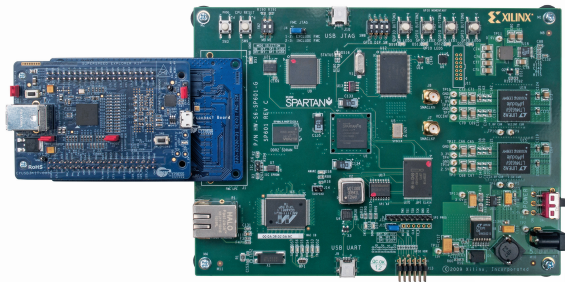


## FMC INTERCONNECT BOARD CYUSB3ACC-005

1. Connect the EZ-USB<sup>®</sup> FX3<sup>™</sup> SuperSpeed Explorer (CYUSB3KIT-003) to the FMC Interconnect Board (CYUSB3ACC-005)

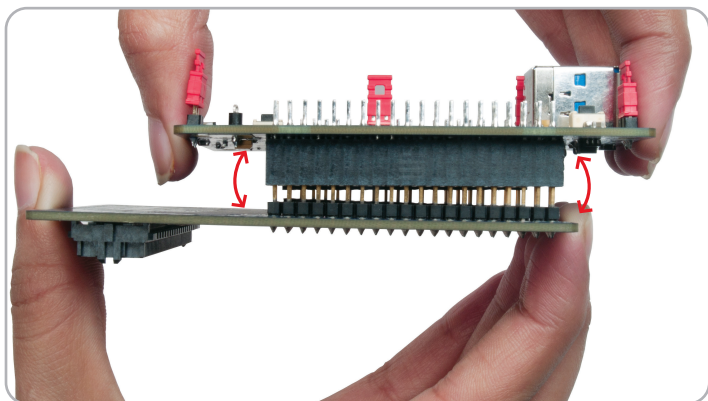


2. Plug the FMC Interconnect Board into the Xilinx<sup>®</sup> FPGA board (The Xilinx FPGA board is not part of this kit)



3. Make sure that Jumper J5 on CYUSB3KIT-003 is open
4. Learn to use FX3 in applications involving Xilinx FPGA with the application note **AN65974 - Designing with the EZ-USB<sup>®</sup> FX3<sup>™</sup> Slave FIFO Interface** available at <http://www.cypress.com/go/AN65974>

# FMC INTERCONNECT BOARD CYUSB3ACC-005



## Note:

Please take care when removing the accessory board from the SuperSpeed Explorer Kit board. The suggested removal method is shown in the picture above. Hold the accessory board and use a rocking motion to separate the boards safely

For the latest information about this interconnect board and to download the hardware files, visit [www.cypress.com/go/CYUSB3ACC-005](http://www.cypress.com/go/CYUSB3ACC-005)

For the latest information about EZ-USB FX3 SuperSpeed Explorer Kit (CYUSB3KIT-003) and to download Kit Software and Hardware files, visit [www.cypress.com/go/SuperSpeedExplorerKit](http://www.cypress.com/go/SuperSpeedExplorerKit)