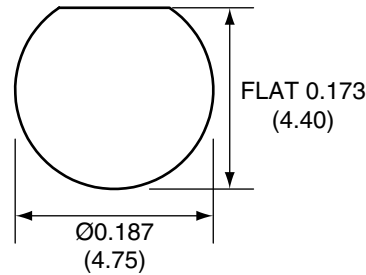


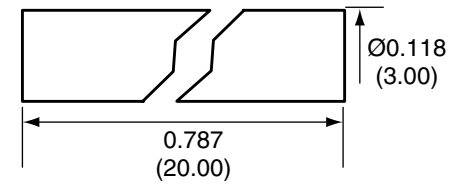
Description	Material	Finish
Body	Brass	Gold
Pin	PH Bronze	Gold
Insulation	PTFE	N/A
Nut	Brass	Gold
Washer	Brass	Gold
Heat Shrink	Polyolefin	Black
Support	Brass	Gold
Spacer	PTFE	N/A

REVISIONS			
REV	DESCRIPTION	DATE	APPV
B	Added new title block and heat shrink; Updated instructions	11-JUL-12	SAH

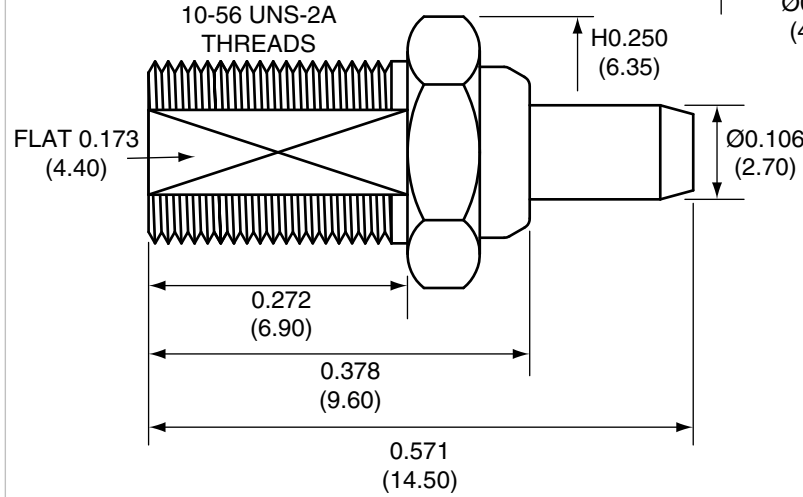
### RECOMMENDED MOUNTING HOLE



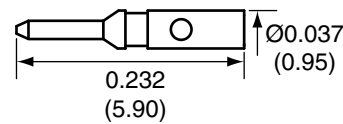
### HEAT SHRINK



### SIDE VIEW



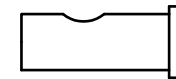
### PIN



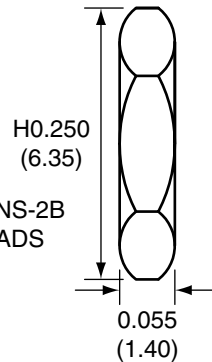
### SPACER



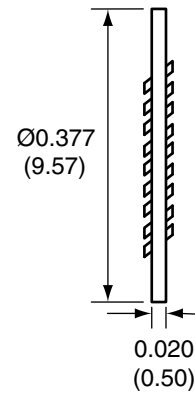
### SUPPORT



### NUT



### WASHER



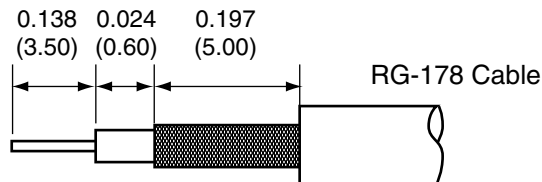
### CONREVMCX005-R178 ASSEMBLY INSTRUCTIONS

- Strip the cable to the recommended dimensions.
- Slip heat shrink onto the stripped cable.
- Solder the support onto the braid.
- Place the spacer onto the center conductor.
- Solder or crimp the pin onto the center conductor.
- Insert the pin, center conductor, spacer, and support into the body until the pin snaps in.
- Crimp the tail of the body onto the support with a 0.093" hex crimp tool (or one labeled for use with RG-178 cable).
- Use heat shrink to cover crimp.
- Use the nut and washer to secure the connector to a case.

#### NOTES: (UNLESS OTHERWISE SPECIFIED)

- ALL DIMENSIONS ARE IN INCHES [mm].
- DIMENSIONS APPLY AFTER FINISHING.
- MANUFACTURE TO BE COMPLIANT WITH EU RoHS DIRECTIVE.
- SAFETY BREAK ALL SHARP CORNERS AND EDGES .02 MAXIMUM.

### RECOMMENDED CABLE STRIPPING DIMENSIONS



**WARNING:** THIS DRAWING CONTAINS PROPRIETARY INFORMATION THAT IS THE SOLE PROPERTY OF LINX TECHNOLOGIES, AND SHALL BE TREATED AS SUCH. NO DISCLOSURE OR REPRODUCTION OF THIS DOCUMENT IS PERMITTED, IN WHOLE OR IN PART, WITHOUT THE EXPRESS WRITTEN PERMISSION OF LINX TECHNOLOGIES OR ITS DESIGNATED AGENTS.

MATERIAL:	TOLERANCES: .020 [0.50]-.200 [5.00]= ±.008 [0.20] .200 [5.00]-1.200 [30.00]= ±.016 [0.40] 1.20 [30.0]-4.75 [120.0]= ±.024 [0.60] 4.75 [120.0]-12.40 [315.0]= ±.040 [1.0]	PROJECTION: 
FINISH:	DRAWN: B.MURPHY	DT: 11-JUL-12
	ENGR: S.HOGAN	DT: 11-JUL-12

		159 ORT LANE	
		MERLIN, OR 97532	
TITLE:			
RP-MCX FEMALE BULKHEAD MOUNT CABLE END CRIMP FOR RG178 CABLE			
SIZE	DWG. NO.	REV	
A	CONREVMCX005-R178	B	
SCALE: 2:1	DO NOT SCALE DRAWING	SHEET 1 OF 1	