

NOTES:

1.0 ELECTRICAL SPECIFICATIONS:

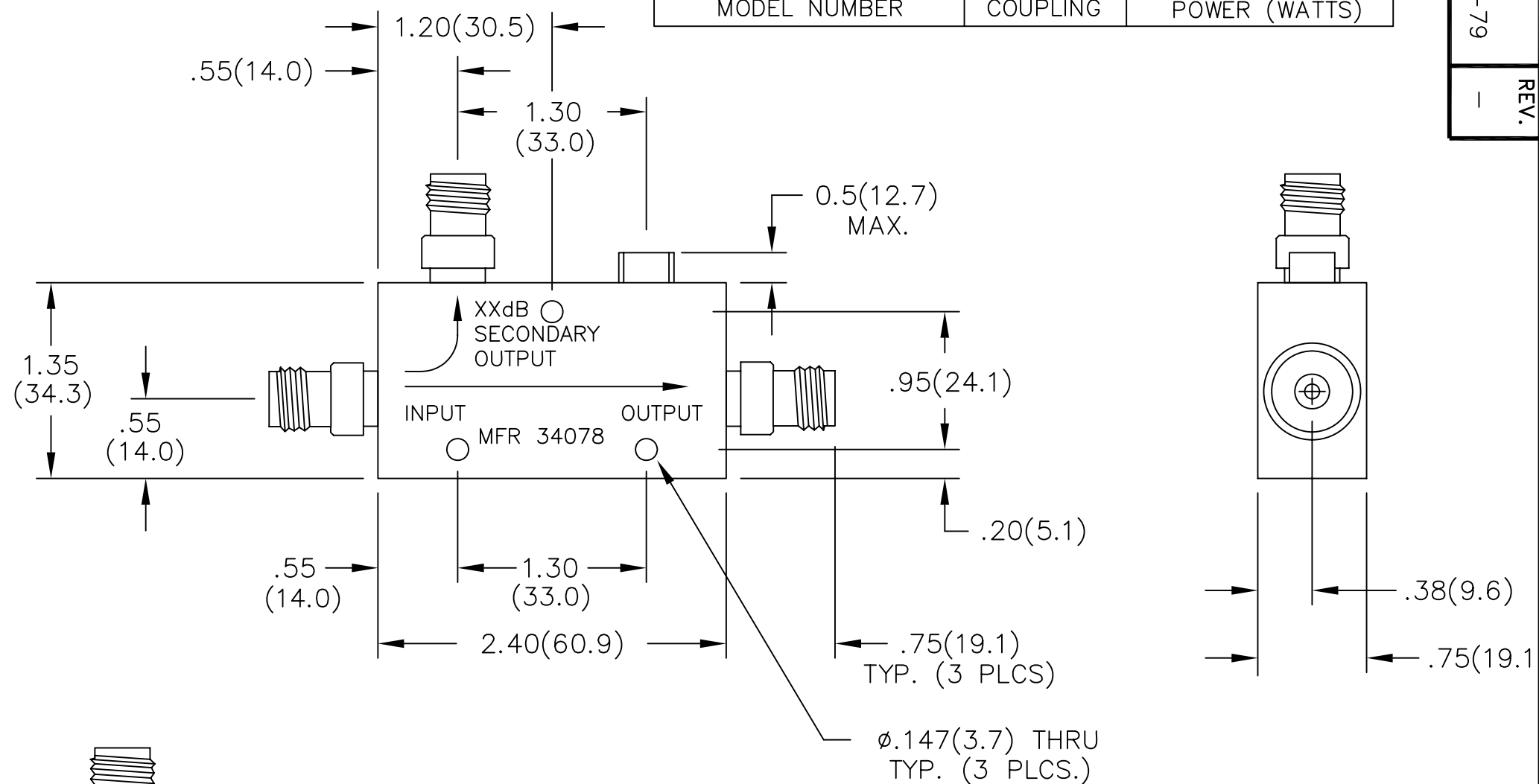
- 1.1 FREQUENCY RANGE: 7.0 to 12.4 GHz
- 1.2 FREQ. SENSITIVITY:  $\pm 0.75$ dB
- 1.3 COUPLING: SEE TABLE
- 1.4 VSWR (MAX): 1.50:1
- 1.5 INSERTION LOSS (EXC. COUPLED POWER): 0.55dB MAX.
- 1.6 DIRECTIVITY: 15dB MIN.
- 1.7 POWER: SEE TABLE
- 1.8 RF IMPEDANCE: 50 OHMS
- 1.9 WEIGHT (MAX.): 6.8 oz.

2.0 FINISHING:

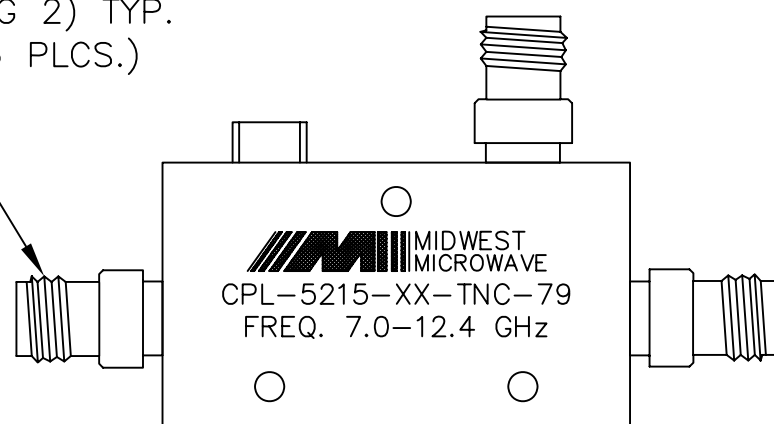
- 2.1 GREY OVER MIL-E-15090 TYPE II, CLASS 2 OVER MIL-C-5541 CLASS 3A MEETS MIL-F-14072 MEETS MIL-E-5400 AND MIL-E-16400V.
- 2.2 MARK UNIT AS SHOWN. (REF.: SLK-08139-82-[24-27])

3.0 DIMENSIONS IN PARENTHESIS ARE IN MILLIMETERS.

CPL-5215-30-TNC-79	30dB	50	50	3,000
CPL-5215-20-TNC-79	20dB	50	50	3,000
CPL-5215-10-TNC-79	10dB	50	10	3,000
CPL-5215-06-TNC-79	6dB	50	4	3,000
CPL-5215-XX-TNC-79 MODEL NUMBER	-XX $\pm 1.0$ dB COUPLING	INPUT POWER (WATTS)	REF.	PEAK



TYPE TNCA JACK  
INTERFACE PER  
MIL-STD-348A  
FIG. 313-44  
(INTERFACE ALSO  
MEETS TYPE TNC  
18 GHz, GRADE 1  
PER IEC 169-26,  
FIG 2) TYP.  
(3 PLCS.)



BACKSIDE MARKING

UNLESS OTHERWISE NOTED DIMENSIONS ARE IN INCHES AND TOLERANCES ARE:

- 3 PLACE DECIMALS  $\pm 0.005$
- 2 PLACE DECIMALS  $\pm 0.02$
- FRACTIONS  $\pm 1/64$
- PARALLELITY: T.I.R. \_\_\_\_\_
- FLATNESS: T.I.R. \_\_\_\_\_
- CONCENTRICITY: T.I.R. \_\_\_\_\_
- ANGLES AND PERPENDICULARITY:  $\pm 1^\circ$

FSCM NO.  
**34078**

**MIDWEST MICROWAVE**

NOTICE: The information contained in this drawing is proprietary and must not be used without the permission of Midwest Microwave

TITLE  
DIRECTIONAL COUPLER

DRAWN/DATE  
S.ORLOV  
5/9/06  
CHECKED/DATE

ENG./DATE  
R.HALL  
5/9/06  
APPROVED/DATE

DRAWING NUMBER  
CPL-5215-XX-TNC-79

SCALE: 1=1 SHEET 1 of 1

DATE	5/9/06
DESCRIPTION	RELEASED
REV.	1